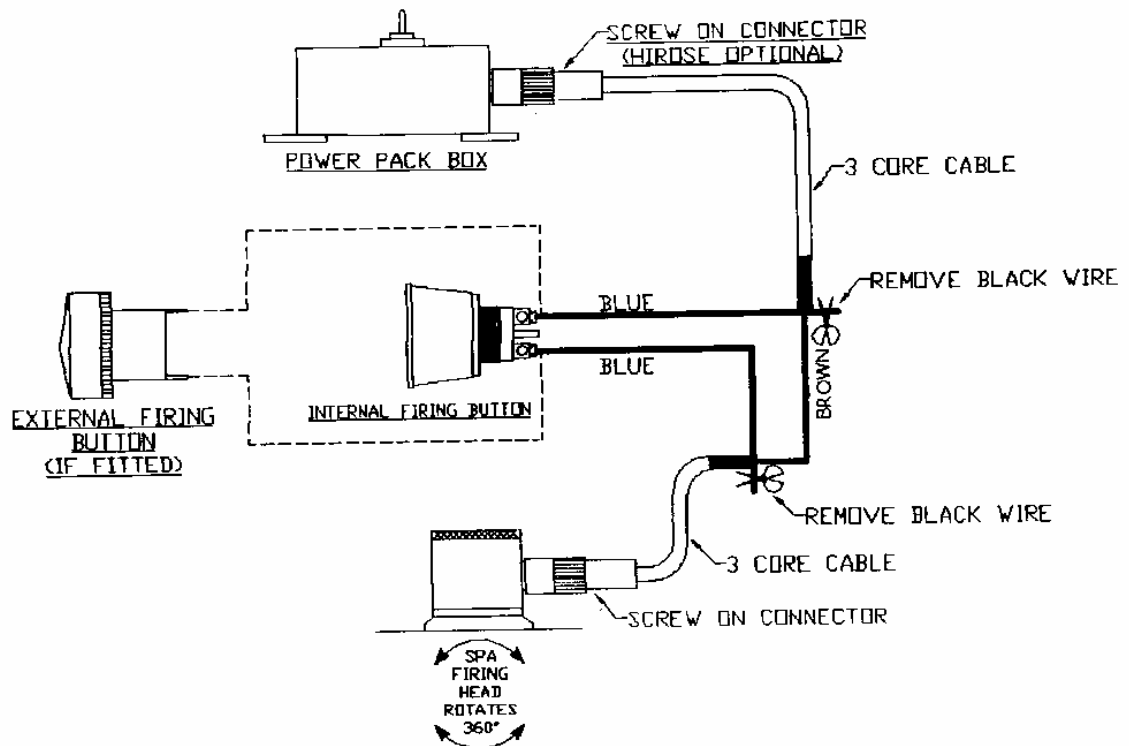




SPA DESIGN LTD
COMMON BARN,
TAMWORTH ROAD,
PACKINGTON, NR LICHFIELD
STAFFS. U.K. WS14 9PX
TEL: 01827 300150
FAX: 01827 300151
e-mail: sales@spa-uk.co.uk
WEB SITE: www.spa-uk.co.uk

S.P.A FIRE – FIGHTER SYSTEM SCHEMATIC WIRING SYSTEM



to test the battery, push and hold the rocker switch in the "BATTERY CHECK" position until the light flashes.

If the extinguisher tubing is to be removed, push the black collet in and pull the tubing out at the same time

DO

USE THE CONTINUITY TEST AND BATTERY TEST BEFORE EACH RACE.

DO NOT

RUN THE CABELS NEXT TO POWER CABELS, OR IN THE SAME LOOM.

SPA FIRE FIGHTER ELECTRICAL DETAILS

The **SPA** fire fighter system is an electrically triggered foam spray fire extinguisher system. The system uses actuators to operate valves located on the pressurised containers that contain the extinguishant liquid. These are triggered remotely using a battery powered pack.

In order to guarantee reliable operation the actuators used are of military specification and system/battery test. Electronics are integrated into the remote power pack.

The connectors on the firing heads are also of military grade and use two contacts per lead in order to guarantee the best quality connections.

The actuators are designed to either operate individually, or to be connected in series if two firing heads are used.

The power pack electronics can test the continuity of the electrical wiring. And also provides a high current pulse test on the battery to ensure system integrity before use.

Unlike other systems, the battery test electronics do not destroy or excessively drain the battery during this test.

These test are performed using a three way switch on the power pack and should be performed before each usage of the system, since the system is only as good as the battery that powers it and the integrity of the wiring and its connections.

To check the condition of the battery push the switch up to the battery check position and hold every 2seconds you will see a **YELLOW** light flash. If the light flashes very dimly the battery should be replaced **IF IN DOUBT CHANGE THE BATTERY**.

To check the continuity of the wiring ensure that the switch on the power pack box is switched to **SYSTEM INACTIVE** to ensure that the fire extinguisher is not fired. Press the internal firing button and check that the **RED** light comes on. Press the external firing button and check that this also makes the **RED** light come on. To arm the system push the switch to system activate.

CABLE INSTALATIONS DO'S & DONT'S

DO'S

Do ensure that the wiring cables do not run next to power cables. or in the same loom as power cables especially if they are ignition or battery power cables ideally run all cables next to the chassis {earth}

Do ensure that any exposed plugs that are likely to get water spray are protected with rubber boots

DONT'S

DO NOT allow cables to run through sharp edged apertures without protection.

DO NOT fix the cables next to or onto any surface likely to cause physical temperature damage